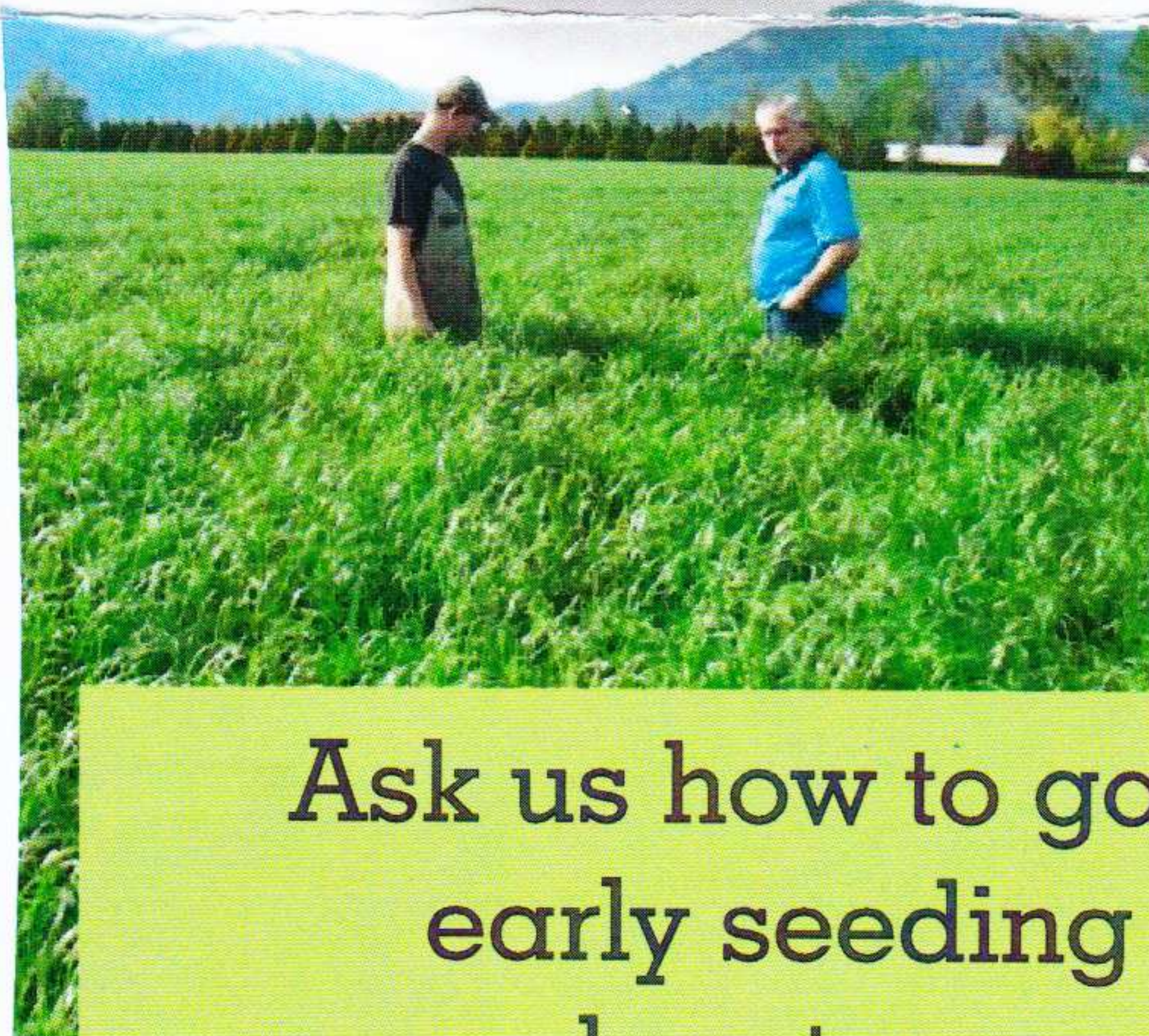


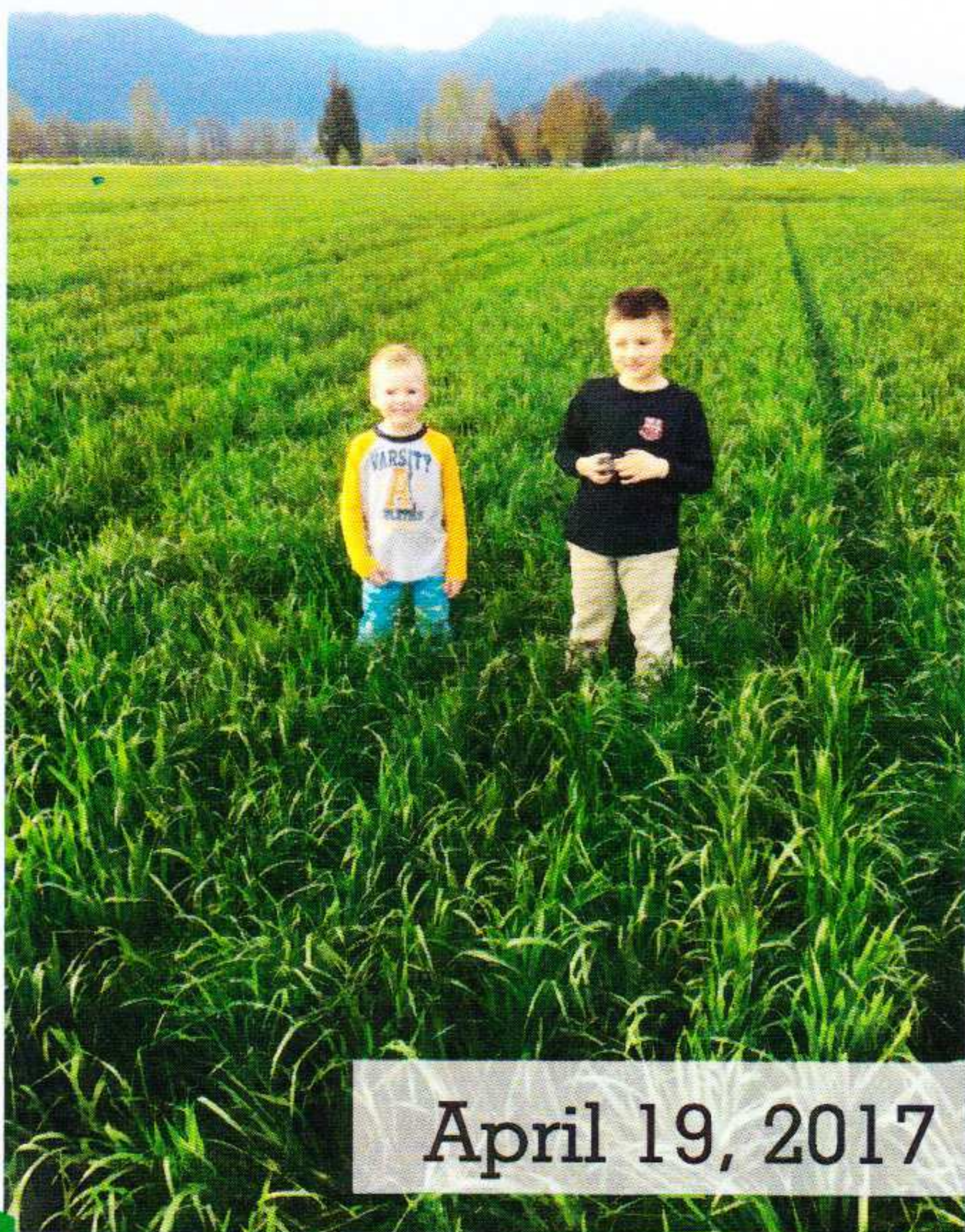
August 2017



Ask your Feed Consultant
why you are not feeding
Milk Maker Brand
Cover Crop



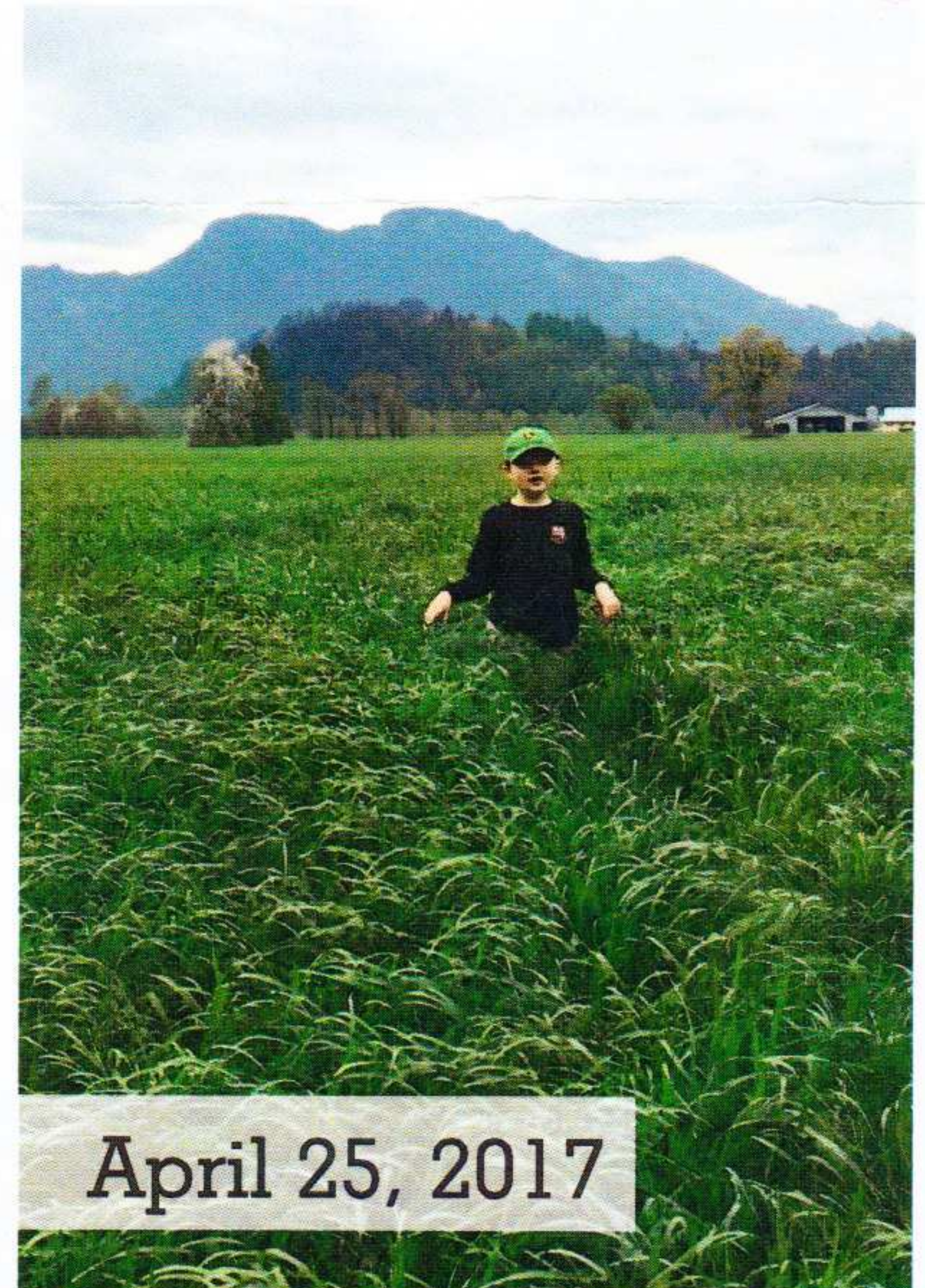
Ask us how to gain
early seeding
advantages
this fall, with it being a
"late year"



April 19, 2017

Q: "How
important is
spring vigor?"

Very!



April 25, 2017



Call or email today: sales@dairycrop.ca
Gerry DeGroot - 604-819-4139
Morgan Umpleby - 604-798-4847

Mid-Season Trial Scouting 2017



- Winter survival
- Disease resistance
- Spring vigor
- Biomass measurement

*- Proven, Tried and Compared
in the Fraser Valley -*

"Not using an inoculant is similar to working a field, fertilizing it and then walking away and not putting any seed in- you just harvest whatever comes up. Inoculant controls what is doing the fermentation."

Thomas Kilcer

Cornell Cooperative Extension

SiloSolve[®] MC

is a silage additive containing three strains of Lactic acid Bacteria.

One strain is noted for its PATENTED ability to help control undesired microbes such as clostridia.

SiloSolve[®] AS

is a combination of fast growing Lactic Acid bacteria and unique strain of L. Buchneri.

Significantly improves aerobic stability in grass and corn silages

Biomax 5

"One of the **BEST** corn silage inoculants for the price"



*Consult with Dairy-Crop today to see
which type will work with your farm*



DAIRY-CROP
SOLUTIONS



*Follow us on Twitter
for Current Crop Advice*

Gerry DeGroot - 604-819-4139
Morgan Umpleby - 604-798-4847